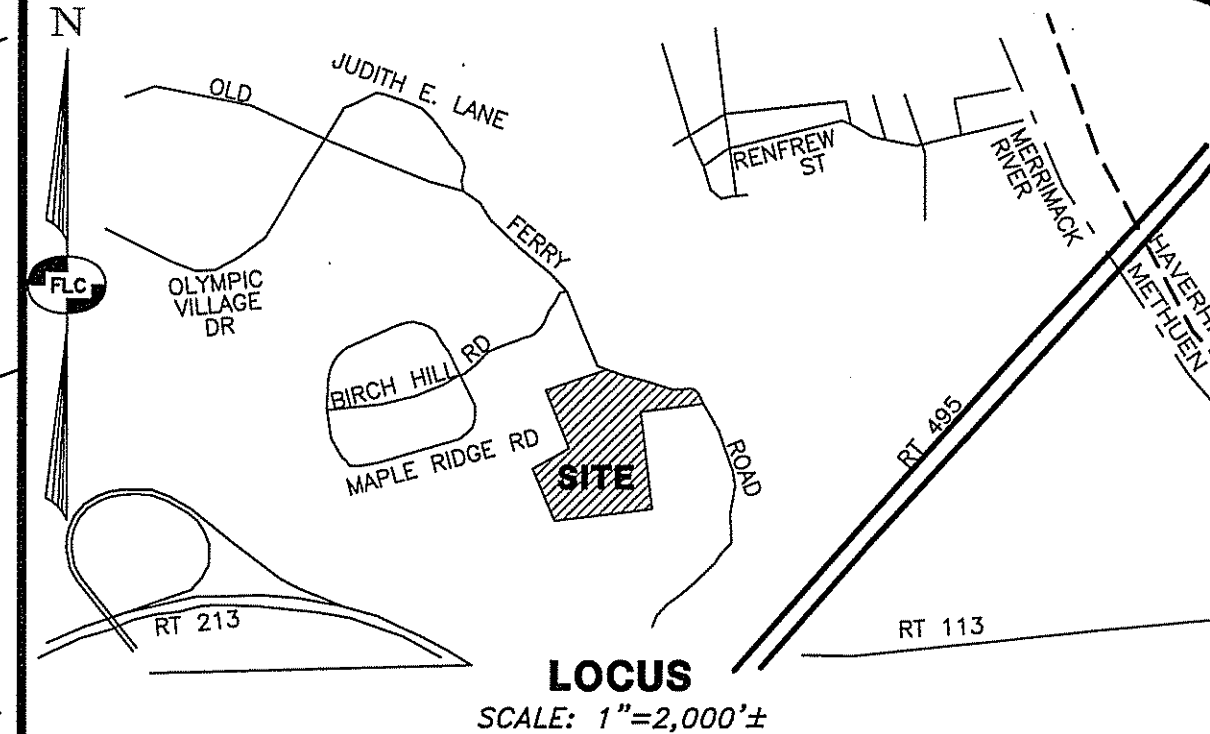


LEGEND:

EXISTING FEATURES

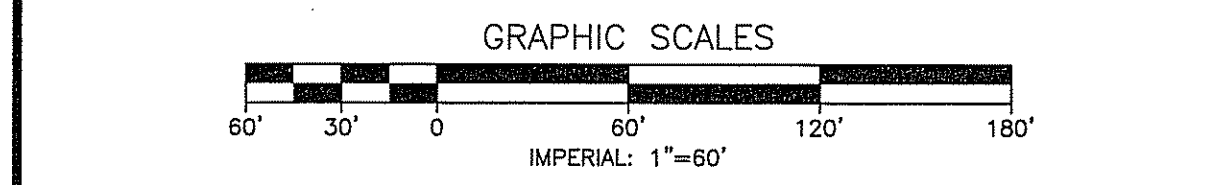
- RIGHT-OF-WAY LINE
- BOUNDARY LINE
- ABUTTING LOT LINE
- BUILDING SETBACK LINE
- EXISTING EASEMENT LINE
- EDGE OF PAVED ROAD
- EDGE OF GRAVEL ROAD
- STONE WALL
- EDGE OF TREE LINE
- EDGE OF WETLANDS
- WETLANDS BUFFER LINE
- 300' 10' CONTOUR INTERVAL
- 302' 2' CONTOUR INTERVAL
- CHAIN-LINK FENCE
- STOCKADE FENCE
- CULVERT
- OVERHEAD UTILITY LINE
- UNDERGROUND ELECTRIC DIGSAFE
- UNDERGROUND GAS LINE
- WATER LINE

- 1010-79-17 TAX MAP & LOT NUMBER
- GRANITE BOUND FOUND
- DRILL HOLE FOUND
- IRON PIN FOUND
- UTILITY POLE, GUY & LIGHT
- CATCH BASIN (SQUARE)
- WATER HYDRANT
- WATER VALVE
- WATER SHUT-OFF
- WELL
- SIGN WITH TWO POSTS
- RIP RAP
- ROCK
- BOLLARD 6" DIA 3' HEIGHT



NOTES:

1. THE PURPOSE OF THIS PLAN IS TO DEPICT THE TURNING TEMPLATE FOR THE CITY OF METHUEN FIRE DEPARTMENT'S FIRE APPARATUS. THE REFERENCE DRAWING FOR THE 95' AERIALCAT REARMOUNT PLATFORM TITLED "KME - KOVATCH - KME FIRE APPARATUS - ONE INDUSTRIAL COMPLEX - NESQUEHONING, PA 018240" DATED 3/11/16 FOR THE METHUEN FIRE DEPARTMENT WAS USED FOR THE DIMENSIONS OF THE VEHICLE DEPICTED.



REV.	DATE	DESCRIPTION	C/O	DR	CK

FIRE APPARATUS TURNING EXHIBIT
PIE HILL WAREHOUSING
TAX MAP 1010 LOT 79-17
(46 OLD FERRY ROAD)
METHUEN, MASSACHUSETTS
PREPARED FOR:
TRIPLE G, LLC
59 BONANNO COURT, METHUEN, MA 01844

SCALE: 1" = 60' APRIL 4, 2022

Surveying ♦ Engineering ♦ Land Planning ♦ Permitting ♦ Septic Designs

FIELDSTONE LAND CONSULTANTS, PLLC
206 Elm Street, Milford, NH 03055
Phone: (603) 672-5456 Fax: (603) 413-5456
www.FieldstoneLandConsultants.com

